

# ARMIDALE TREE GROUP NEWSLETTER

## Number 132 – SPRING 2024



***Editors: Narelle Clarke and Kerry Steller***

**Armidale Tree Group**

**80 Mann St, Armidale, 2350**

**Phone 67711620**

**<http://armidaletreegroup.org.au/>**

**Cover Photo:** Costa Geodiardis and Wayne Powell with his Costa sculpture at the New England Gardeb Festival. *Photo: Kerry Steller*

## **FROM THE EDITORS**

2024, our 40<sup>th</sup> year, has been remarkable in so many ways. So much has been achieved thanks to the combined efforts of the staff, the committee and especially our members and supporters many of whom have volunteered their time and expertise and contributed generously when needed. Considering the roll call of events from the birthday celebrations, to the Open Day, the Community Koala Plantings, the Bush Dance, involvement in the New England Garden Festival, Black Gully Festival and monthly markets you would wonder when we have had time to plant over 80,000 trees and shrubs. To find out how we did this and so much more including extending the nursery to double production and building a BRIDGE to improve accessibility in the Michael O’Keeffe Woodlands you will have to read the **The President’s Report to the Annual General Meeting 2023-24** by **Dave Steller**.

**This edition is dedicated to our amazing staff, volunteers and members!**

### **THANK YOU**

And thank you to QANTAS for cancelling Costa’s flight after the Garden Festival and facilitating an extended visit to the Nursery and the Woodlands.



*Alicia Cooper- (our former manager and long time Costa fan) and her daughters with Costa at the Nursery. Photo: Kerry Steller*

## In this edition

- **From the Committee**
  - The President's Report to the Annual General Meeting for 2024  
- David Steller
  - Changes to the management committee for 2025 –Narelle Clarke
  - Vale Brian Henry Coggan
- **Michael O'Keeffe Woodlands Bridge Project** David Steller
- **New England Garden Festival** – Kerry Steller
- **Opening of WW2WW by AURG at the Creeklands** – Kerry Steller
- **Our new Tunnel House** - Michaeliana
- **Response to Climate Risk** – Peter Metcalfe
- **CWC report** – Ken Barnett



ATG's Black Gully Festival stall in a shady spot. Thanks to all the helpers and organisers of this community celebration of the Arts, Music and the Environment.  
Photo: David Steller

**ARMIDALE TREE GROUP Inc. 2023/24 PRESIDENT'S REPORT  
TO THE ANNUAL GENERAL MEETING**

**David Steller**

Having celebrated our 40<sup>th</sup> Anniversary last year, this year was highlighted by expansion of the nursery facility utilising the generous donations made in our 2023 fundraising year. The new tunnel house was completed and has proved its worth already with our plant stocks not only improving in number but in quality. The additional work to link up all our roof water to our aboveground storage system has improved the quantity and quality of water supplied to our irrigation system. We can store upwards of 100,000 litres of water and not rely solely on our dam water. Thanks to John Collins and Sean Walker for their work in working with Doug Lees to underground all our services and interconnect the new tunnel house to our existing infrastructure.

The plan to extend the nursery to double our production was only made possible by the hard work of the Committee and staff to ensure that production continued whilst construction went on. Kim and the nursery staff have implemented a number of changes that have improved the presentation of our retail stock and hence turnover in retail. Kim came up with some great ideas for our open day that attracted a lot of interest and increased sales. We have to also acknowledge our dedicated nursery volunteers who turn up every week and help with propagation of both seedlings and cuttings and keeping the stocks up for our wholesale nursery.

At this time last year Jesse Powell joined our team as Environmental Services Co-ordinator and has excelled in this difficult and challenging role. It was a very steep learning curve for Jesse and his team, but they have jelled into an effective, efficient and reliable team. Major achievements have been the completing of the Round 1 Koala Community Grant that was completed in May and final report submitted in October this year. The Round 2 Koala Community Grant has commenced and is 40% completed with one third of the trees in the ground already. That when coupled with our Round 1 grant will see 22,000 trees established for koala habitat in the general Boorolong area. Apart from the grant work a large number of

works on private property and commercial developments have kept the ES Team very busy.

We are still in a rebuilding stage with increased demand for our products and services. Richard Bell joined the team as Office Co-ordinator and has provided great support to our Co-ordination team and is a valued member who is able to turn his hand at anything put him. Other staff additions have included Zac and Sabnam in the nursery and a large number of casuals in ES area. We thank Sam, Marty and Brad for their hard work in their areas of speciality and their support of the ATG mission. We farewelled Josie and Ben from the nursery staff and wish them all the best for their future.

To our volunteers, especially our Committee of Management who have kept a close eye on our operations and strategic direction in providing skills and guidance to assist our staff and the community in providing a better environment on the tablelands. Special thanks to Chris, Dave, John, Kate, Peter, Narelle, Barton, Lorna, Liz, Sue and Sean for their technical, botanical, ecological and governance skills in assisting with grant application opportunities and advice to our customers and community generally. Thanks to Narelle for taking minutes and keeping our recording of important events up to date and Kerry as our education and Public Officer. Both Narelle and Kerry have put together some great newsletters this year.

We thank Chris Nadolny for his role as treasurer until unfortunately a few health concerns caused him to step down from that position, but we thank Garry Slocombe for rejoining the Committee as Treasurer for the last few months during Chris' absence and for getting the financial statements to Greg for review. Thank you to Paul MacFarland for standing in as President during my 3-month sabbatical during winter this year.

Thanks must also go to Carla for her efforts in keeping the books and payroll up to date. Carla has advised that she will be unable to continue her bookkeeping role but will stay until we find a replacement. Not to forget Greg Clarke who again has taken on the role to audit our financials, it is very much appreciated. Greg has also advised that he will no longer be able to provide our

audit review, and we thank him for his honourable contribution to this role for many years.

After many years on the Committee, we are saying farewell to Kate Boyd, but she will continue as an active and helpful volunteer member and hopefully continue on our Fund Committee. I am confident that there will be new members putting up their hand to help out and join the Committee.

It is with great satisfaction that we see the installation the 40<sup>th</sup> Anniversary Footbridge in the Mike O’Keeffe Woodland. Thank you to our donors, especially Armidale Central Rotary who made a recent \$10k donation to pay for the bridge abutments designed by New England Surveyors and Engineering and constructed by Mitchell Bell. Moodie Outdoors has supplied the bridge and installed by Stuarts Cranes.

Thanks to members for their continued support of our business and spreading the word. Our membership is increasing which speaks volumes for the value people see in our work. Thank you one and all and may you have a happy Christmas and Prosperous New Year.

David Steller, President, November 2024



Vice-President Barton Wicksteed and his daughter Maggie at the Christmas markets in the mall. Why not buy a Native Christmas Tree? ATG has a variety of mallees for the home garden.  
Photo: Kerry Steller

## Changes to the Management Committee

There are some notable changes to the ATG Committee for 2025. Paul McFarland has moved from his previous role, as Vice President to President and David Steller is taking over as Treasurer from Garry Slocombe. Barton Wicksteed is Vice President and Narelle Clarke Secretary. Other committee members are Chris Nadolny, Peter Metcalfe, Lorna Dickson, Liz Anderson, Susan Newey, Kerry Steller Garry Slocombe, Dave Carr and Sean Walker. We welcome Glen Kelleher to the committee.

Long standing committee member Kate Boyd has retired from the management committee, which she joined in 2008. She moved home to Armidale in 2001 to work when she was working with Greening Australia providing regional bushland support. When GA work ended in 2003, she continued bushland regeneration in three Armidale reserves through Armidale Tree Group. More recently Kate was employed as the Bushland Regeneration Officer by Uralla Shire Council (2012-2021). Very briefly, bushland regeneration involves providing conditions that are conducive to natural re-colonisation by indigenous native plants, microbes and animals, mostly by very careful weed removal/control which makes space for natives, and sometimes extra steps to enable recovery by the ecosystem.

Kate has been instrumental in bush land revegetation projects in and around Armidale. In particular she has led volunteer groups to achieve some excellent results at Drummond Park – the area surrounding the Armidale Lookout on north hill and Snow Gum Reserve (on Markham Street below Donnelly Street).

***Kate Boyd at ATG's  
Every Tree Counts  
community day -  
Enmore***



Kate has been instrumental in bush land revegetation regeneration projects in and around Armidale. In particular she has led ATG volunteers' groups to achieve some excellent results at Drummond Park – the area surrounding the Armidale Lookout on north hill - and Snow Gum Bushland Reserve (on Markham Street below Donnelly Street). She still seeks volunteers to help with this ongoing work.

Many of our members have volunteered with Kate on these and other projects. Some of us may even remember working with Kate's parents Robert and Joan Boyd to establish 'Beadle Grove' Reserve (on the corner of Lynches' Road and Markham Street) and many other early ATG projects. Her expertise and cheerful positivity will be missed at committee meetings, but she has assured us of her ongoing support as a member, especially on ATG's new Acacia Park Crown Reserve committee. She will continue, for a little while at least, on the ATG Fund Committee. Thank you from the Committee and ATG membership. We wish you Kate success in her current and future ventures.

**Narelle Clarke**

**Vale Brian Henry Coggan**

22/03/1939 - 23/10/2024

It is with great sadness that we advise our members of the death of Brian Coggan. We express our condolences to Maryanne, Pip, Sarah, Ewen and families. Brian was the auditor of the financials for the Armidale Tree Group from 2006-2019 and voluntarily offered his services to the Group. Brian was instrumental in helping the Management Committee form a Strategic Plan for our direction after the untimely death of Mike O'Keeffe when we were struggling to manage our affairs. When we farewelled Brian, he was awarded with Life Membership to the Armidale Tree Group.

## **Mike O’Keeffe Woodland Footbridge over Black Gully**

ATG has responsibility for a large parcel of Crown Land owned by the NSW State Government. The Mike O’Keeffe Woodland area is an urban woodland forest with a large manmade water lake that is a haven for native and international bird species, travelling south for the northern hemisphere winter. They attract many local visits from walkers especially dog walkers and to circumnavigate the area they are required to use the road network outside the woodland on the southern boundary of the site.

The ATG applied for a NSW Crown Lands Grant to complete the circular walk route around the lake at the southern end across Black Gully with a new pedestrian crossing. The span was 12 metres and is located at the southern end of the lake where Black Gully enters the lake just north of the Kentucky Street road culvert and pedestrian bridge. The proposed location is approximately 40m downstream from the road boundary where a low-level pedestrian footbridge could be constructed.

In 2022 we applied for a grant and in December 2022 we were successful in receiving a Community Building Partnership Grant CBP22. Unfortunately, the grant was significantly less than what was requested in our application. The Committee decided to proceed with the project by accepting the grant and spending 12 months fund raising the shortfall as part of our 40<sup>th</sup> Anniversary Fundraising campaign. A variation to the grant was requested to allow us more time to raise funds to meet the shortfall. The extension of time allowed us to better plan the project and tweak the budget. The following Armidale Express article was published in January 2023.

### **State Government grant to purchase and install a timber truss footbridge to span Black Gully Creek**

*A WALK around the Black Gully Reserve and Mike O’Keeffe Woodland is about to become a lot safer and more enjoyable thanks to a \$32,970 State Government grant to purchase and install a timber truss footbridge to span Black Gully Creek.*

*MP Adam Marshall said the Armidale Tree Group was motivated to apply for the grant as members had identified a safety risk for visitors to the woodland and were hoping to create a safer, more enjoyable loop walk.*

*"To walk through the woodlands and access both sides of the wetland, walkers need to cross a hazardous section of Kentucky Street," Mr Marshall said.*

*"With the installation of the footbridge and establishment of a loop path, this street crossing can be avoided and will allow for improved visitor enjoyment and access to the reserve.*

*"The planned riparian restoration surrounding the footbridge will also improve the habitat value for native birdlife, while improving the aesthetics of the reserve.*

*"It's a great project and I'm hoping that people who enjoy visiting the Mike O'Keeffe Woodland will soon be enjoying the ease and safety afforded by the new bridge.*



MP Adam Marshall with Armidale Tree Group General Manager Alicia Cooper enjoying the Mike O'Keeffe Woodland, where a \$32,970 grant has been secured to install a footbridge over Black Gully Creek. (Armidale Express 20 January 2023)

*"Well done to Alicia and her team on securing the funds."*

*Armidale Tree Group General Manager Alicia Cooper said they intended to have the project fully delivered by the middle of this year.*

*"While the footbridge will need to be purchased further afield, we will be using local contractors for the associated earthworks and we will be providing native plants to revegetate and rehabilitate the creek banks after construction," Ms Cooper said.*

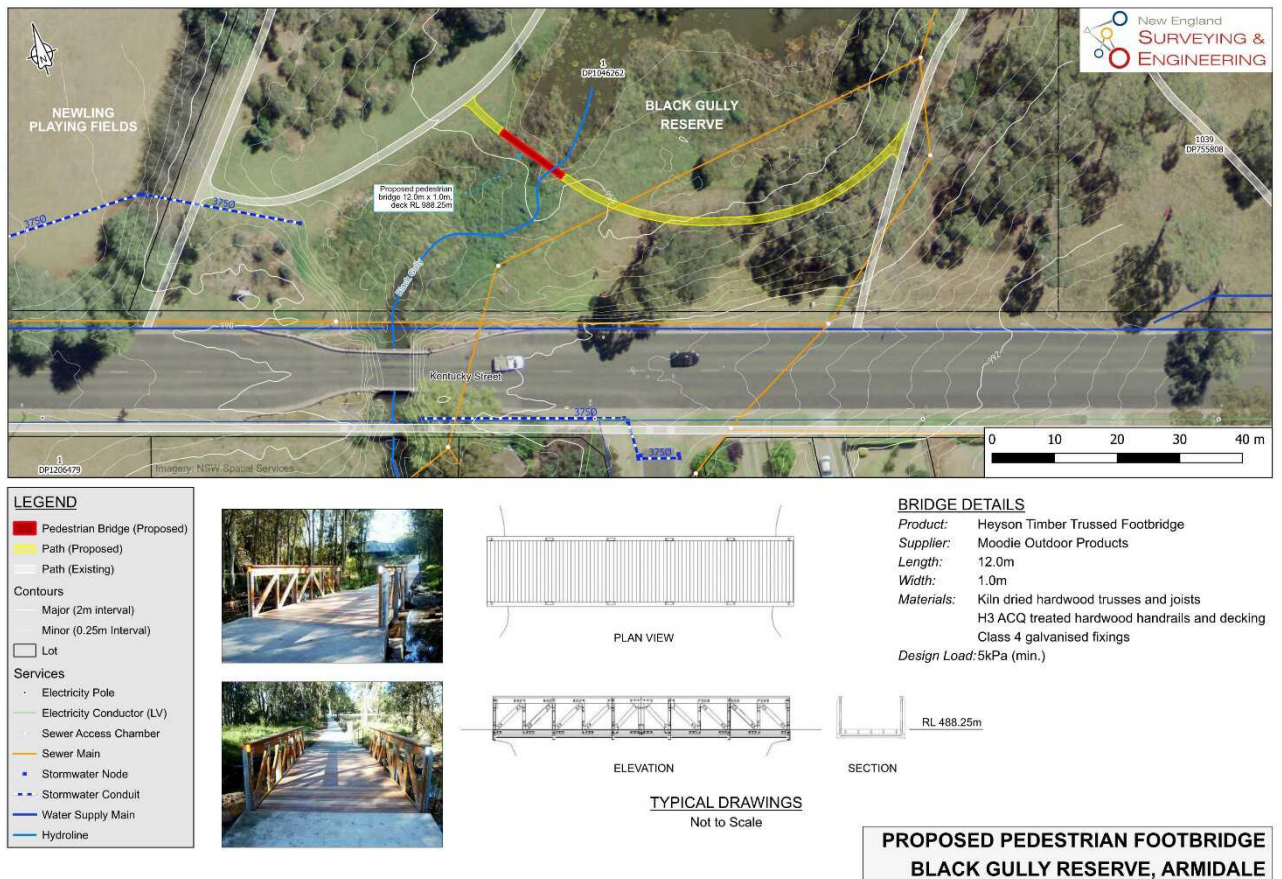
*"We were very happy to hear that our application was successful and we're looking forward to being able to increase visitor accessibility to this wonderful piece of remnant urban woodland.*

*"The mature native plantings and constructed wetland provide a wonderful environment for outdoor classes, workshops and guided tours, all of which will be*

improved with the addition of a timber footbridge to allow visitors to safely cross the creek."

Thanks must go out to Iain MacKay who made a wonderful video clip of the proposed project for use in our Chuffed fundraising campaign that raised \$15,000 allowing us to purchase a 12m long 1m wide Heyson Timber truss bridge from Outside Products in Brisbane for \$48,000. There was still a shortfall to construct the abutments for the bridge and the approaches. In Late 2024 Armidale Central Rotary Club made a generous donation of \$10,000.

New England Surveying and Engineering (thanks to Rowan and Malcolm Donnelly) provided the layout plan shown below and set out the abutment foundations for Mitchell Bell to construct the concrete abutment and screw pile footings.





The abutments and footings were constructed with intention of unloading the bridge from the delivery truck onto the new abutments in one operation. Unfortunately, the abutments were constructed to plan but then the weather gods stepped in and 100mm of rain in a couple of days put pay to that idea as the ground into the site was saturated and unable to support the weight of the crane and truck.



The bridge was delivered to Armidale on 19 November 2024 and unloaded by Pedro from John Stuart Cranes and Engineering at their depot in Armidale with their 50t capacity crane. After a week and half of good dry weather, the ground conditions were determined suitable to install the bridge. With local transport operator Paul Shields providing the semi-trailer the bridge was loaded on Thursday 28 November 2024 as a pending storm from the west built up and fortunately stayed away long enough for “operation launch the bridge” to commence.

All went well with only a few small hiccups but nothing that stopped the overall operation being a complete success as can be seen in the next photo.



The bridge sits well in its wetland environment and with the addition of gently sloping approaches will look great in a few weeks.



Thank you to all our generous donors and what a great community asset we have achieved for \$60k

## **FUNDRAISING FOR THE BRIDGE**

Thanks to all those who attended our Bush Dance in October and to the amazing Big Hairy Bush Band who donated their talents to make this event a success. And thanks to Liz Anderson for organising!



## New England Garden Festival – and Costa’s Visit Kerry Steller

On 2<sup>nd</sup> and 3<sup>rd</sup> November, the New England Garden Festival was held, and Costa Geordiardis (from Gardening Australia) was invited up to Armidale to be part of this great annual event for our city. Jesse. Powell’s father, Wayne, who is a sculptor offered us a sculpture of Costa to enhance our Tree Group stall at the festival. It was very popular with many people, including Costa, stopping for a photo with it. Thanks, Wayne, for your effort in creating and erecting the sculpture for us.



Gary Slocombe and Glen Kelleher at the Garden Festival. Photo: Kerry Steller

Kim Kneebone ran a Native Cuttings workshop at the festival that was well attended. *Photo: David Steller*



Kim really wanted Costa to visit the Tree Group Nursery and invited him. Costa made time after the festival on Sunday to visit the Armidale Tree Group nursery and had afternoon tea with some of our staff, members and volunteers.



Kim and Costa at the Nursery.  
*Photo: Kerry Steller*

Costa was very interested in our propagation and our projects and toured our nursery. He listened intently to our story, and he told us many of his stories. When we spoke of Council lands as their 'land estates', Costa was impressed and said he would use this term in future when referring to the land that Council holds in trust for their community. Costa told us the story of a school with an amazing principal who did a great landscaping and native planting with the students. When they advertised for a gardener to look after this beautified school area they advertised for a 'Garden Curator'. What a way to treasure what has been entrusted to you for the future.



Costa in our new Michaeliana tunnel house.  
*Photo Kerry Steller*

We took Costa for a walk around the Mike O’Keeffe Woodland, and he was unflagging in his energy and enthusiasm for the remnant vegetation that we are helping to preserve. When we showed him the bridge site with the fresh footings in place Costa got excited with our community project. And decided to do a live feed on his Facebook page. Look it up. Costa really gave us a plug for our bridge (and said he’d come up for the opening). We were called ‘Armatreelians’ on one of the comments on the post. I like that.



David Steller explains how the abutments were installed for the new bridge over Black Gully. Photo: Kerry Steller

## WW2WW Opening – Congratulations to AURG

### Kerry Steller



On 28<sup>th</sup> September 2024 the WW2WW or Weedy Wasteland to Wildlife Wetland was officially opened. What an amazing achievement by a AURG (Armidale Urban Rivercare Group) group of dedicated volunteers over a long period of time. Setbacks such as COVID-19, flooding, vandalism and changes to council requirements caused a need to extend the time period required to undertake the work.

In 2021 AURG was awarded a \$290,030 State Government grant to regenerate a 450-metre-long section of creek lands off Douglas Street. Southern New England Landcare was granted the funding, on behalf of Armidale Urban Rivercare Group (AURG) through Round 4 of the *Stronger Communities Fund*. The grant included clearing an exotic part of the creek and re-establishing a native wetland following a wetland design from UNE's Aquatic Ecology and Restoration Research Group headed by Dr Sarah Mika. The project complemented and enhanced community assets along this section of Dumaresq Creek and had to comply with many conditions of the approved grant.

WW2WW is part of the Visions for Armidale beautification of our Armidale Creeklands and a huge undertaking by the Armidale Tree Group who propagated and provided many of the trees, shrubs and forbs for this project.

Willows and privet were removed to clear the area for planting. Stumps were left to help stabilise the creek bed, provide habitat for wildlife and create riffles that allow for oxygenation of the water (which currently has low levels of dissolved oxygen). Selective weed spraying on the banks helped prepare for native planting. Different zones of native plantings were established.

Zone 1 – Tall Spikerush (*Eleocharis sphacelata*)

- Zone 2 – Common Spikerush (*E. acuta*), Tall Sedge (*Carex appresa*), Rush spp. (*Juncus usitatus*)
- Zone 3 – *Lomandra longifolia*, Tooton (*Leptospermum polygalifolium* subsp. *trianmontanum*)
- Zone 4 – a range of the usual Creek mix from ATG including Eucalyptus, Callistemons, Acacia and Leptospermums.

AURG worked with Council re the location of sight lines, picnic tables, creek access points and shade trees.

A great achievement!

Thank you to Angus Adair, Bruce Whan and Bryan Johnston, the movers and shakers of AURG.



Angus Adair explains the extent of the works by AURG on Dumaresq Creek. *Photo: Kerry Steller*



We were welcomed to the opening of the WW2WW by local dancers. *Photo: Kerry Steller*

## Our new Tunnel House - Michaeliana

The nursery looks great! Our new Tunnel house ‘Michaeliana’ now has rainwater tanks and is full of seedlings. Thanks to all the amazing nursery staff for working hard to utilise this new growing space.

Two 22,000L water tanks were installed.



Left:  
September  
seedlings  
planted.  
Right:  
December  
seedlings



## **Response to Climate Risk**

### **Peter Metcalfe**

*Thanks to Peter who ran a successful Wattle Day on 1<sup>st</sup> September on his property and had over 30 people visit and hear about over 40 species of wattle on his property. (editor's note)*

These comments are based on my observation over 40 years on a small block with native trees and planted trees and shrubs on trap rock soil near Armidale.

#### **Plant selection for a drier climate with hotter summer maxima.**

Frosts probably will not be as severe as previously.

Do not plant Snow Gum (*Euc. pauciflora*) or Black Sallee (*Euc. stellulata*), unless you especially want them for a very cold position. Local populations are showing heat stress. For lower sites plant Mountain Gum (*Euc. dalrympleana*), Ribbon Gum (*Euc. viminalis*) and River Oak (*Casuarina cunninghamiana*) and New England Peppermint (*Euc. nova-anglica*)

The widespread death of Stringybarks on local hilltops means the species selection should be "slid downhill" Perhaps ironbark on rocky ridges, stringys on the upper slope above yellow box and Blakely's red gum. Stringybark is used by many birds for nesting material.

Rough-barked angophoras withstood the drought very well so they can be added to any planting. Hillgrove spotted gum has not been badly affected and are adaptable to various soils and positions on the mid-upper slope. Both these species are attractive to koalas.

Many Acacias survived the drought, such as *viscidula*, *pravissima*, *fimbriata*, *pycnostachya*, *mearnsii*, *decurrens*, *adunca*, *floribunda*, *pubifolia* *pycnostachya*, and *diphylla*. Some old wattles died but they have been replaced by root suckers, eg. *Acacia dealbata* and *melanoxylon* or by seedlings, e.g. *Acacia amoena*, *rubida*, *cultriformis*

It is notable that species that have survived the drought quite well are those adapted to the edges of the gorges where water is in short supply e.g. *Acacia ingramii*, *diphylla*, and *amoena*. Also, shrubs such as *Westringia*, "Wollomombi" and *W. "Aberfoyle"*, *Babbingtonia crassa* from Dangars Falls. *Bulbine vagans*, a lily from Dangars Falls has survived and proliferated.

Another group that survived the drought are plants from drier habitats., eg all the *Eremophilas* from the mallee and desert, *Callistemon brachyandrus* and *Acacia cultriformis* from western NSW.



Bulbine bulbosa  
Photo: Warren  
Sheather

Some plants look soft but have proven to be tough, e.g. *Correa glabra* “green”, also other *correas*, *Grevillea iaspicula* “Wee Jasper”, *Grev. arenaria* and *Babbingtonia* “Clarence River Weeper”.

Some very mature *Westringias*, *Correas* and *Prostantheras* died but many of their seeds germinated and thrived after the rains arrived.

Some *Bottlebrushes* failed but others survived, especially the local species such as *Cal. pungens* and *Cal. comboynensis* which is a cliff-dweller.

Other local species to ignore the drought include both *Dianellas*, *Hoveas*, *Bulbine bulbosa*, *Leptospermum polygalifolium*, *Lomandras*, *Olearia elliptica* and *O. alpina*. *Billy Buttons* and *Paper daisies*

#### **Conserve water.**

Mulch garden beds to protect the soil. People use different mulches, including sand, gravel and woodchip. We have been using council mulch to add organic matter to our poor soil. Organic mulches are good for the soil fauna and also fungi.

#### **Water for birds.**

Birds need water for drinking and bathing, especially on hot days. They prefer shallow dishes close to protective vegetation where they can preen in safety.

#### **Fire safety**

Fire resistant vegetation such as *Correas*, *Grevilleas*, *Angophoras* and *Eremophilas* and green lawns (Check on the web for suggestions.)

Any dead plants, especially pines, are fuel for fires.

## Citizens Wildlife Corridors Report – Ken Barnett

Last Sunday's (Nov 1<sup>st</sup>) working bee achieved a good deal, with eight volunteers signing on. While some attended to the familiar tasks of hand pulling the easy weeds and cutting-and-painting the more persistent, others tackled the ever-increasing fields of ivy that have already killed some of the canopy and smothered the understory. Following on from success with a trial treatment last season we again slashed using mattocks and a line trimmer the ivy prior to spraying with the recommended herbicide. If the results are good, we will have made significant inroads into the ivy paddock and can follow up in the coming months.

If you haven't visited the laneways for a while you have missed the best of this year's splendid display of native flowers. It's not too late, and here are a few thumbnails:



And here are before and after photos of last Sunday's attack on the ivy:



Thank you, one and all, for your help and support with this project throughout the year. I know that "pullin n' poisnin" is not glamorous and can seem futile, but we have made a difference. Venture into areas we have not tackled, and you will encounter a different scene!

With best wishes for the coming holiday season, and I look forward to seeing you "Down't Lane" next year, with our next Working Bee on Sunday 5<sup>th</sup> January 2025. Claim the date. Details to follow.

Ken



# Membership Application/Renewal

**Period:** 01/07/2024 - 30/06/2025  
**Name:** \_\_\_\_\_  
**Telephone:** \_\_\_\_\_  
**\*Email (Required):** \_\_\_\_\_

The annual Membership fee is \$10.

Membership \$ \_\_\_10\_\_\_\_\_  
Donation \$ \_\_\_\_\_ (donations over \$2 are tax deductible, a receipt will be emailed)  
Total Payment \$ \_\_\_\_\_

## Payment methods

In store: EFTPOS / Cash  
Mail/email: Credit Card (below) / Direct Credit  
(Send a copy of this form: Email to [office@armidaletreegroup.org.au](mailto:office@armidaletreegroup.org.au); Mail to Armidale Tree Group, 80 Mann Street, Armidale NSW 2350)

Credit Card –	<b>Card type:</b>	Visa / Mastercard only
	<b>Card number:</b>	
	<b>Expiry date:</b>	
	<b>CCV number:</b>	
	<b>Name on card</b>	
	<b>Signature</b>	
Direct Credit -	Please remit payment to BSB: <b>932000</b> Account No: <b>100016306</b> Detail: “Subs <Name>”	

**THANK YOU FOR YOUR SUPPORT!**